

**SALL4**  
**Rabbit Monoclonal antibody(Mab)**  
**Catalog # AD80188****Specification**

---

**SALL4 - Product info**

Application	IHC-P
Primary Accession	<a href="#">O9UJQ4</a>
Reactivity	Human
Host	Rabbit
Clonality	Monoclonal
Calculated MW	112231

**SALL4 - Additional info**

Gene ID	57167
Gene Name	SALL4
<b>Other Names</b>	
Sal-like protein 4, Zinc finger protein 797, Zinc finger protein SALL4, SALL4, ZNF797	

**Dilution**

IHC-P~~Ready-to-use

**Storage**

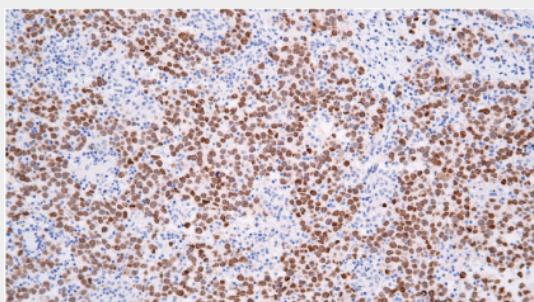
Maintain refrigerated at 2-8°C

**Precautions****SALL4 Antibody is for research use only and not for use in diagnostic or therapeutic procedures.****SALL4 - Protein Information****Name** SALL4**Synonyms****Function****Cellular Location****Tissue Location****ZNF797****Transcription factor with a key role in the maintenance and self-renewal of embryonic and hematopoietic stem cells.****Cytoplasm. Nucleus.****Expressed in testis. Constitutively expressed in acute myeloid leukemia (AML).****SALL4 - Protocols**

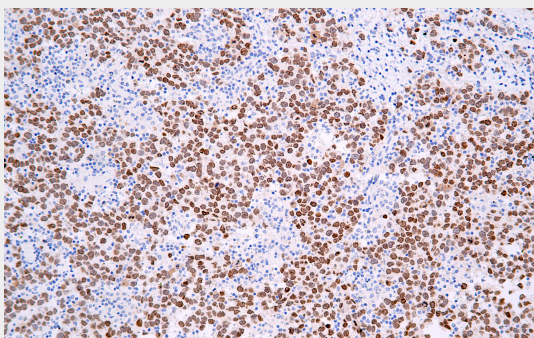
Provided below are standard protocols that you may find useful for product applications.

- [Western Blot](#)

- [Blocking Peptides](#)
- [Dot Blot](#)
- [Immunohistochemistry](#)
- [Immunofluorescence](#)
- [Immunoprecipitation](#)
- [Flow Cytometry](#)
- [Cell Culture](#)

**SALL4 - Images**

Seminoma



Immunohistochemical analysis of paraffin-embedded tissue using AD80268 performed on the Abcarta® FAIP-30 Fully automated IHC platform. Tissue was fixed with formaldehyde at room temperature, antigen retrieval was by heat mediation with a EDTA buffer (pH9.0). Samples were incubated with primary antibody (Ready-to-use) for 15 min at room temperature. AmpSee™ Detection Systems □ Abcepta:AR005 □ was used as the secondary antibody.